

Mark Gertler *Rabbi and Rabbitzen*



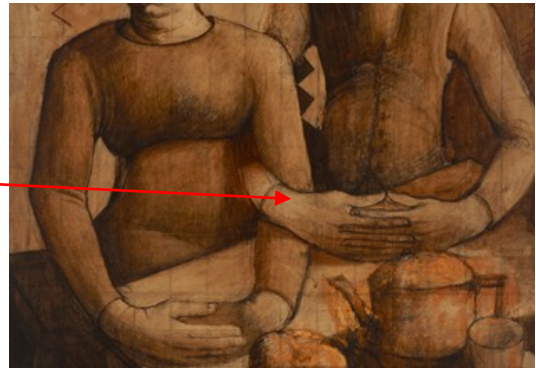
This picture demonstrates the realities of the tough life of the new immigrant communities in the East End, as well as a way of life that was swept away by both world wars.

What can we learn about the lives of this husband and wife couple by looking at this picture?

How would you describe the expressions on the faces of the couple?

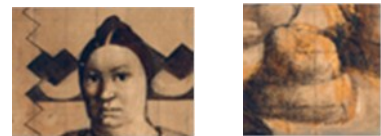
Gertler has linked the arms of the couple like a chain.

What message do you think Gertler was trying to give by representing the couple in this way?



Look closely and you will see that Gertler has drawn a grid underneath his painting. This was a technique commonly used by students at the Slade School of Art (where Gertler was also a studying) during this time period.

Why do you think artists used a grid underneath their paintings? What did it enable the artist to do at a later date?



The simplified geometric shapes can be described as representative of the 'Modernist' style of this painting.

What was Modernism and why did artists start to develop a 'Modernist' style?

What other artists were considered to be Modernists?

Gertler has also used repetition of shapes in this work, such as in the similarity between the loaf of bread and the 'bun' hairstyle of the Rabbitzen. **What other shape repetitions can you see?**