

Solomon J Solomon R.A. *The Breakfast Table*

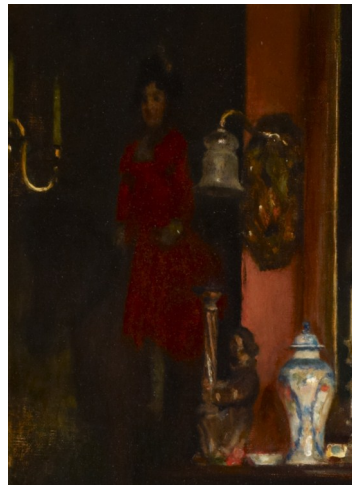
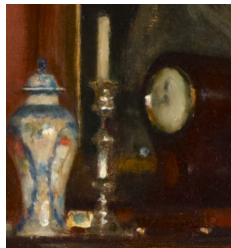


This picture shows what life was like for wealthier Jewish families in England post WWI.

What does this painting tell us about the lives of Jewish people at the start of the 1900's?

What evidence is there that this a wealthy home?

How do the materials and techniques used by the artist create a feeling of wealth and luxury?

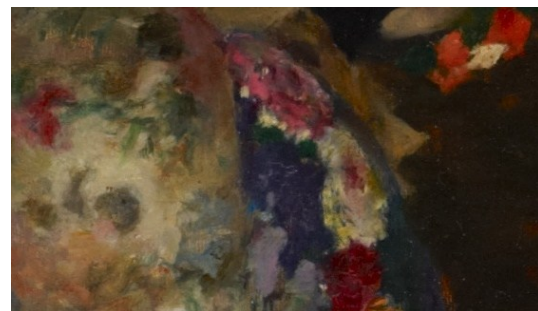


What might the Mother and Daughter be reading about in their newspapers in 1921?

What would you ask the family if you were sitting in the room with them?

You can see this painting on the back wall of the room.

Who is it a portrait of?



How might your response to the pictures change if the artist had swapped materials, perhaps if he has just used pencil?